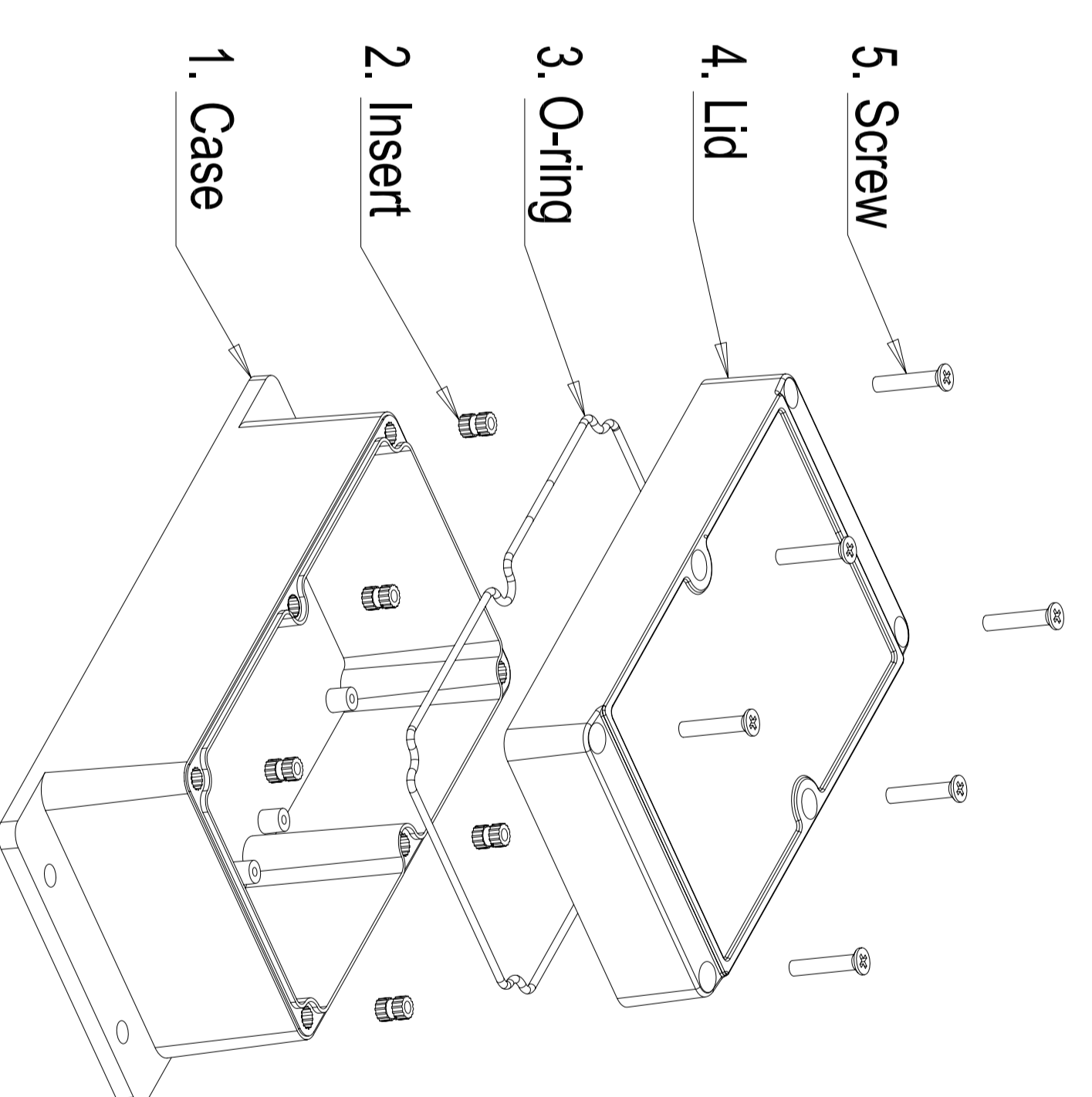


NOTICE
 1. * Measures are reduced to below because the draft tolerance after GTA13/5 DIN16901-130;
 2. Unmarked Draft 2°.



No.	Name	Qty.	Size	Material
5	Screw	6	M4X20 (DIN 965)	Stainless Steel
4	Lid	1	160X90X26	ABS
3	O-ring	1	Ø3X500	PU
2	Insert	6	M4X8	Brass
1	Case	1	160X90X49	ABS

Tolerances: DIN16901 - 130

Treatment:

Scale: Free
 Original Material: ABS
 Chinese Material: ABS

Volume: mm³
 Weight: 0.26 Kg

Index (Customer)	REV	Name	Date	Index (FUXIN)	REV	Name	Date



Metal Processing Co., Ltd

Part Name :

FUP 160 X 090 X 075

Drawing Number :

FUP 160 X 090 X 075

Designer Liu Junbin 2009.12.17

Technician

Quality department

Sheet 1 of 1