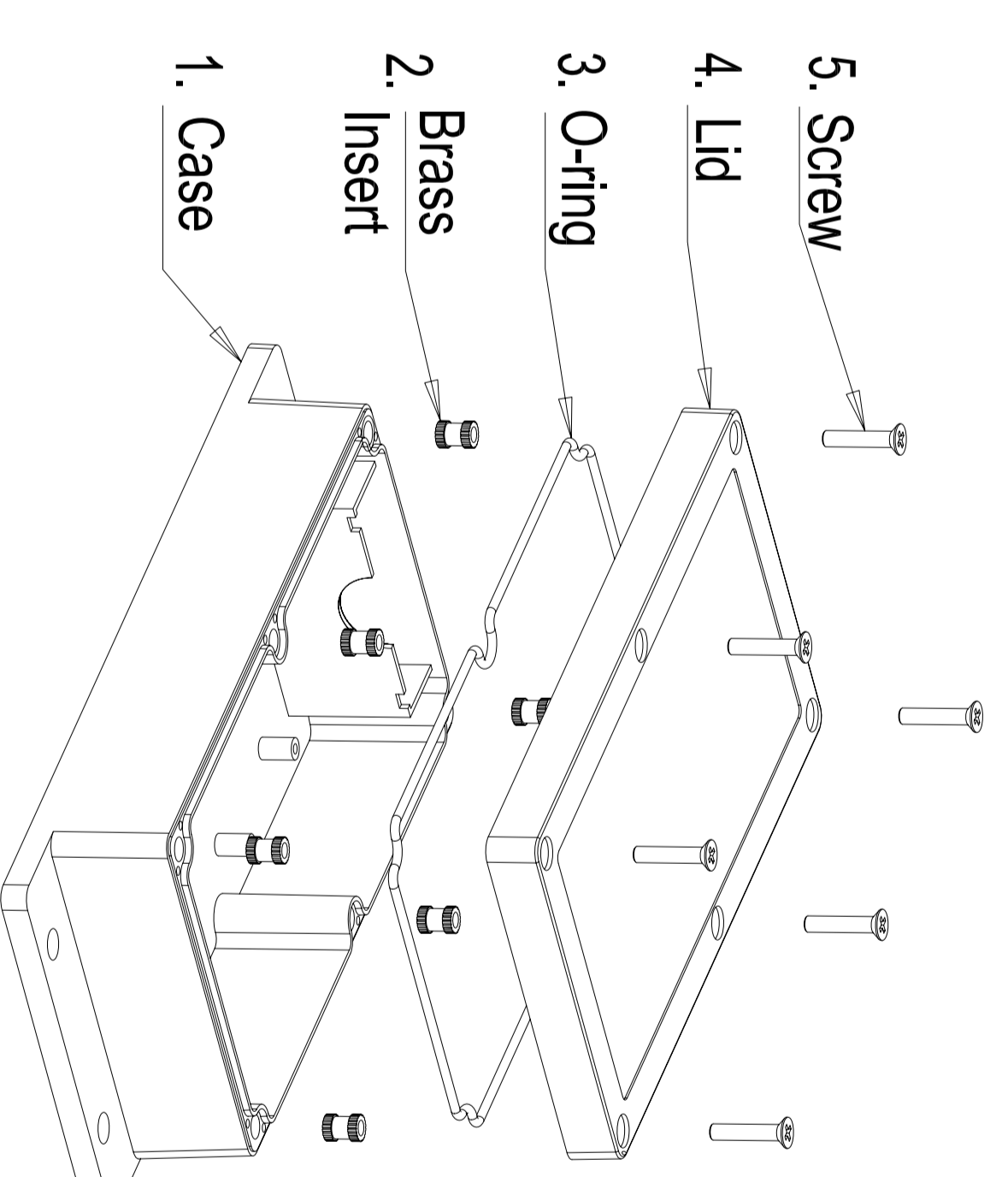


NOTICE

1. * Measures are reduced to below because the draft tolerance after GTA13/5 DIN16901-130;
2. Unmarked Draft 2°.



No.	Name	Qty.	Size	Material
5	Screw	6	M4X20 (DIN 965)	Stainless Steel
4	Lid	1	160X90X12	ABS
3	O-ring	1	Ø3X500	PU
2	Insert	6	M4X8	Brass
1	Case	1	198X92X35	ABS

Index (Customer)	REV	Name	Date	Index (FUXIN)	REV	Name	Date

FUXIN
Metal Processing Co., Ltd

Scale: Free
Original Material: ABS
Chinese Material: ABS

Tolerances: DIN16901 - 130

Treatment:

Part Name :

FUP 160 X 090 X 044

Drawing Number :

FUP 160 X 090 X 044

Designer Liu Junbin 2009.12.09

Technician

Quality department