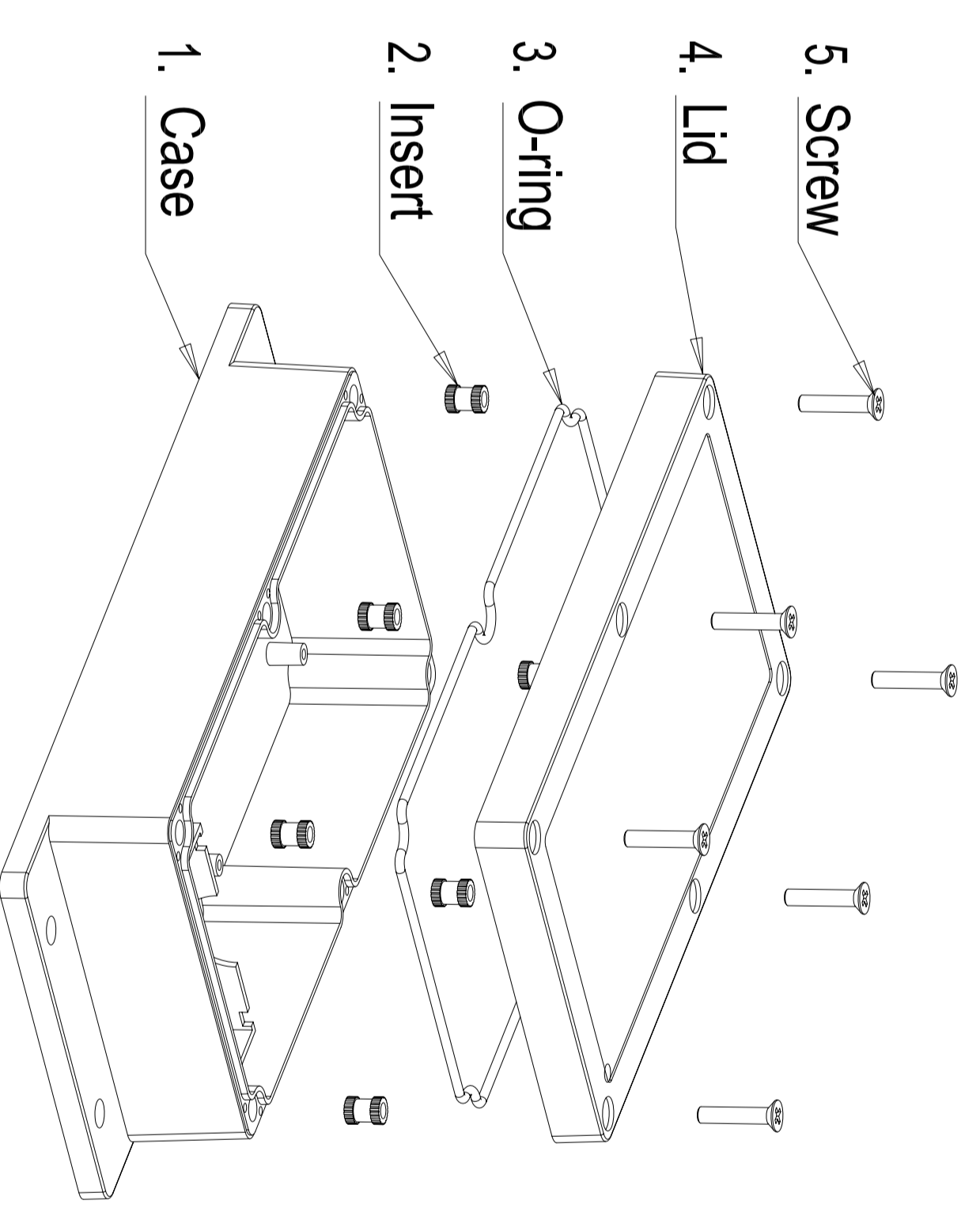


**NOTICE**

- \* Measures are reduced to below because the draft tolerance after GTA13/5 DIN16901-130;
- Unmarked Draft 2°.



No.	Name	Qty.	Size	Material
5	Screw	6	M4X20 (DIN 965)	Stainless Steel
4	Lid	1	158X90X20	PC (Clear)
3	O-ring	1	Ø3X500	PU
2	Insert	6	M4X8	Brass
1	Case	1	198X90X35	ABS

Tolerances: DIN16901 - 130

Index (Customer)	REV	Name	Date	Index (FUXIN)	REV	Name	Date

**FUXIN**  
Metal Processing Co., Ltd

Scale: Free  
Original Material: ABS + PC  
Chinese Material:

Treatment:

Part Name :

FUP 158 X 090 X 046

Drawing Number :

FUP 158 X 090 X 046

Designer Liu Junbin 2009.12.28

Technician

Quality department