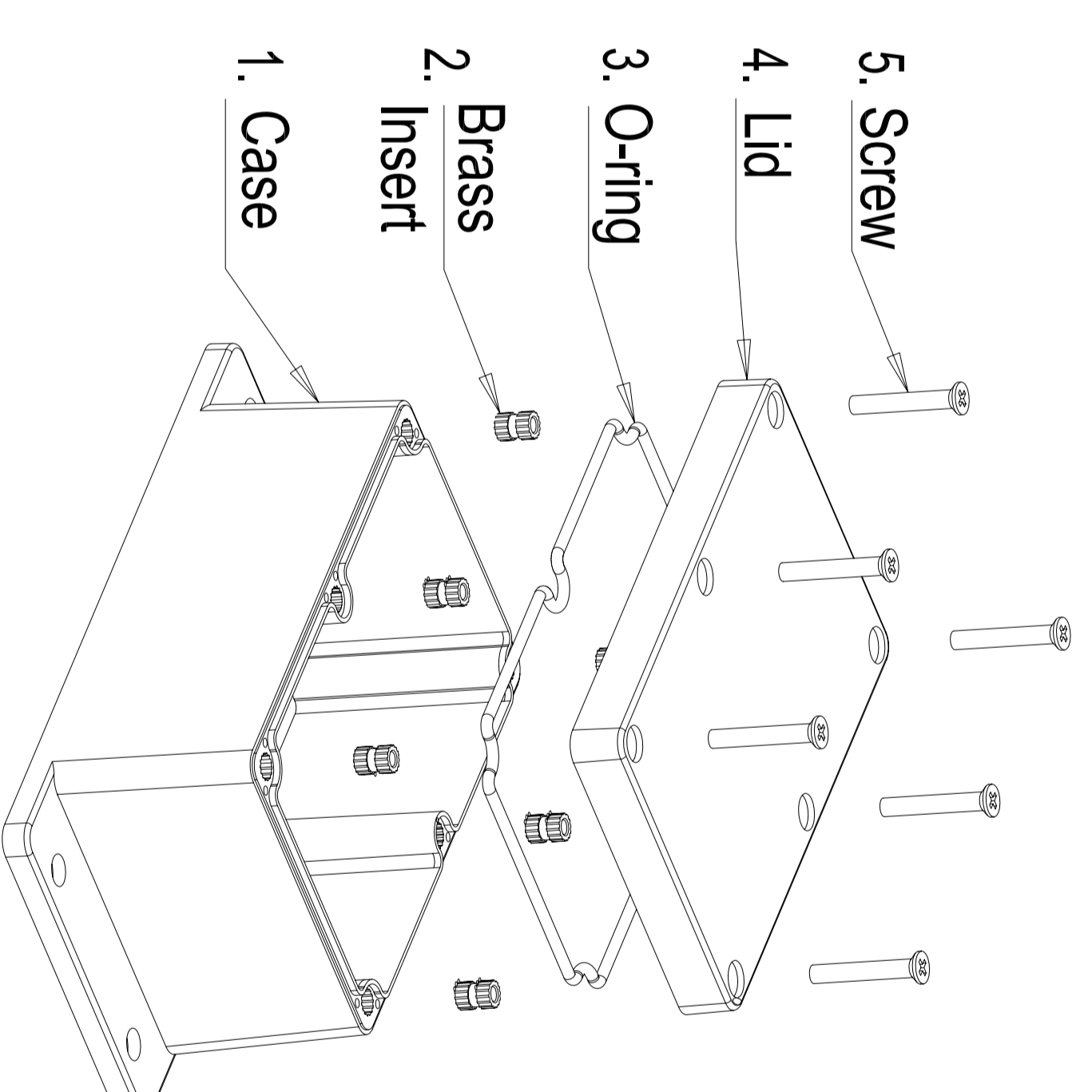


**NOTICE**  
 1. \* Measures are reduced to below because the draft tolerance after GTA13/5 DIN16901-130;  
 2. Unmarked Draft 2°.



No.	Name	Qty.	Size	Material
5	Screw	6	M4X20 (DIN 965)	Stainless Steel
4	Lid	1	120X80X12	ABS
3	O-ring	1	Ø3X410	PU
2	Insert	6	M4X8	Brass
1	Case	1	120X80X53.5	ABS

Scale: Free  
 Volume: mm<sup>3</sup>  
 Weight: 0.196 Kg  
 Original Material: ABS  
 Chinese Material: ABS  
 Tolerances: DIN16901 - 130

Treatment:

Designer: Liu Junbin  
 Date: 2009.12.18

Technician Quality department  
 Sheet 1 of 1



Part Name :

FUP 120 X 080 X 065

Drawing Number :

FUP 120 X 080 X 065

Index (Customer)

REV

Name

Date

Index (FUXIN)

REV

Name

Date